



**MODULAR BELT
CONVEYOR SYSTEM**



MAQ CONVEYORS

Modular & Quality

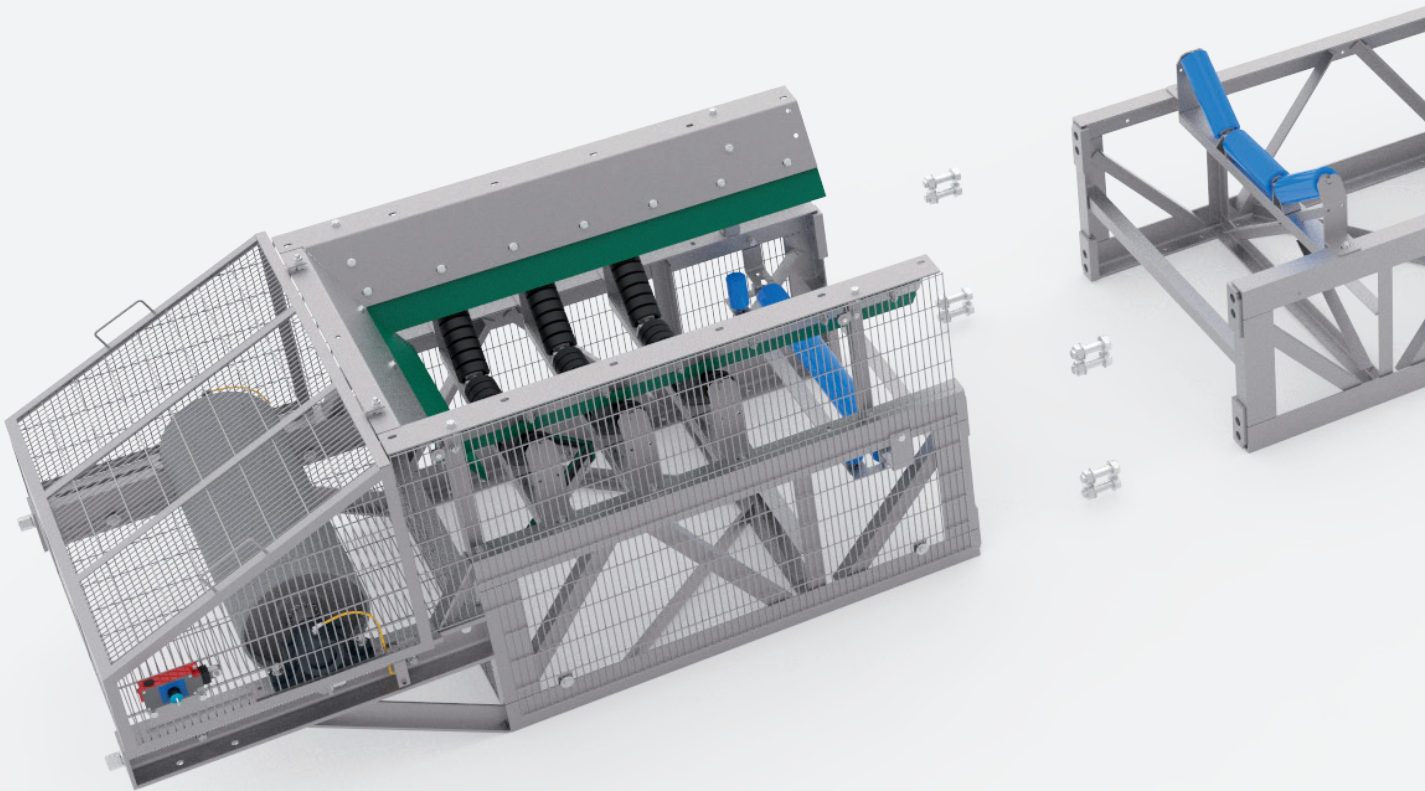
DEVELOPING THE BELT CONVEYOR SINCE 1995.



MODULAR SYSTEM

The MAQCONVEYORS modular system developed by Maquiari-dos is based on the general principle of dynamic, versatile and adaptable belt conveyors.

It is composed of standardized modules, galvanized and interchangeable with each other, according to the width of the belt, which are assembled frontally by bolted joints to conform the conveyor belt.

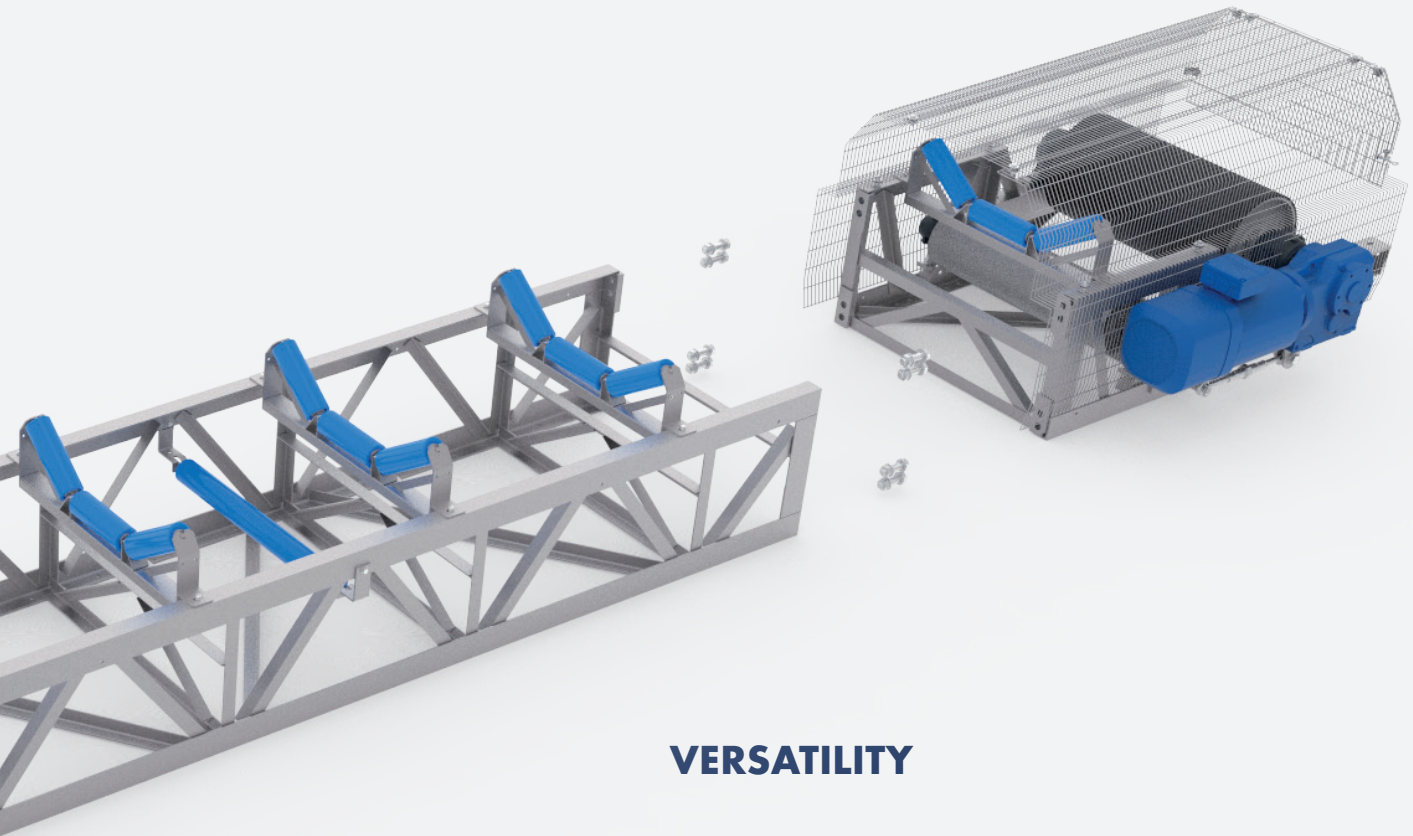


Modular & Quality

Modular: Designed to expedite the assembly as well as future modifications of the conveyor.

Quality: We demand the highest quality in all the elements that comprise the conveyor, both the own manufactured and the provided by our suppliers.

 **ADVANTAGES**



VERSATILITY

ADAPTABILITY

DURABILITY

TRANSPORTATION OPTIMIZATION

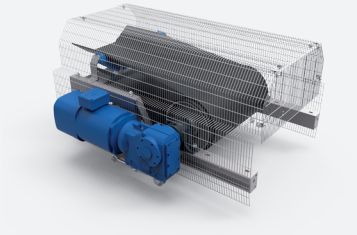
ASSEMBLY OPTIMIZATION

MODIFIABLE / REUSABLE

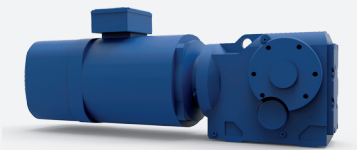
ISO 9001

CE Marking

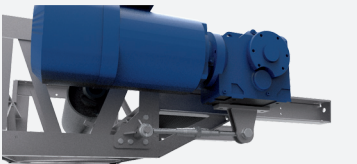




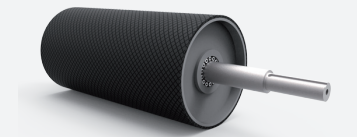
Set of mesh guards at the drive area.



Geared motors: brands SEW – NORD – SIEMENS.



The level screw keeps the gearmotor horizontal even if the inclination of the conveyor varies.



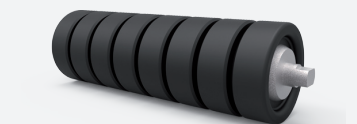
Drive drum lagged with rubber and hot vulcanized. Shaft joined by locating rings.



Double-row spherical roller bearings; SN type housing.



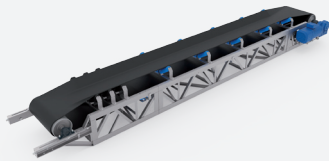
Heavy-duty range smooth rollers, with lifetime lubrication system.



Impact rollers with elastic rubber rings.



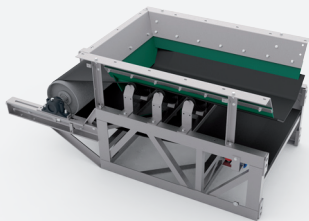
Intermediate sections between 0,33 meters and 12 meters.



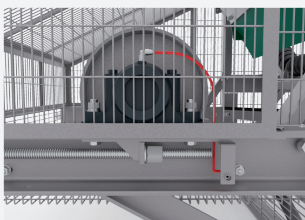
Polyester reinforced belts with rubber coatings, of European manufacture.



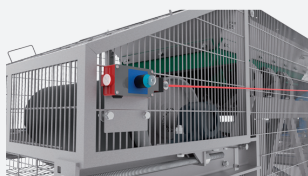
Internal rubber scraper for belt cleaning.



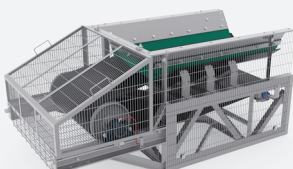
Loading chute at conveyor tail.



Lubrication of bearings with sleeves and fittings that allow greasing with the belt conveyor in operation.



Emergency stop pull wire at one side.



Set of mesh guards at the tail area.

IMMEDIATE AVAILABILITY

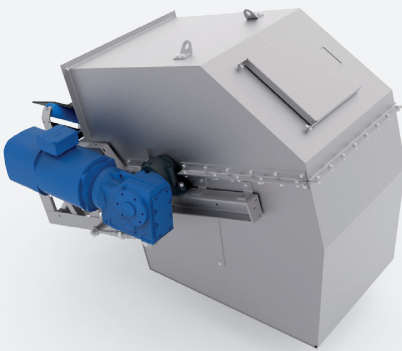
| | | | | | | |
|--|---------------------|--------------------------|---|--|--|--|
| Conveyor Width (mm) | | 500 | 650 | 800 | 1000 | 1200 |
| Maximum material size (mm) | | 165 | 215 | 265 | 335 | 400 |
| Maximum production (tph) *(1,6 T/m ³ & 1,6 m/s) | | 125 | 250 | 375 | 650 | 900 |
| Power (KW) | | 4 - 11 | 4 - 44 | 4 - 60 | 4 - 75 | 4 - 90 |
| Rollers (diameter in mm) | | 89 | 89 - 108 | 89 - 108 | 108 - 133 | 108 - 133 |
| Available belts | | 400/3 3+1,5 400/3 4+2 | 400/3 3+1,5 400/3 4+2 400/3 6+2 500/4 4+2 500/3 6+2 | 400/3 3+1,5 400/3 4+2 400/3 6+2 500/4 4+2 500/3 6+2 630/4 6+2 | 400/3 3+1,5 400/3 4+2 400/3 6+2 500/4 4+2 500/3 6+2 630/4 6+2 | 400/3 4+2 400/3 6+2 500/4 4+2 500/3 6+2 |
| Distance between supports (m) | | 8 - 12 | 12 - 14 | 12 - 14 | 12 - 16 | 12 - 16 |
| Drum diameter (mm) | Drive drums | 270 | 340 - 420 | 340 - 420 - 530 | 340 - 420 - 530 | 340 - 420 - 530 |
| | Return drums | 220 | 270 - 320 | 320 - 400 | 320 - 400 | 320 - 400 |

Contact us to find out more products: **We adapt to your needs.**



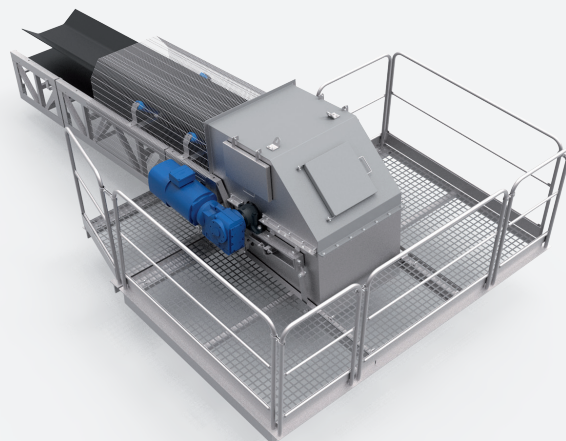
All the elements are ready for their **immediate installation** to the conveyor when the customer needs, simply and quickly, without the need for welding and drilling.

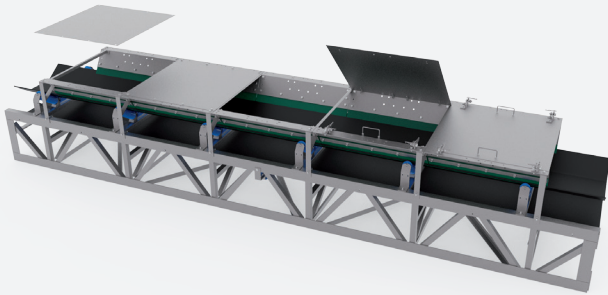
- Impact bar beds
- Slide bar beds
- Extra roller frames



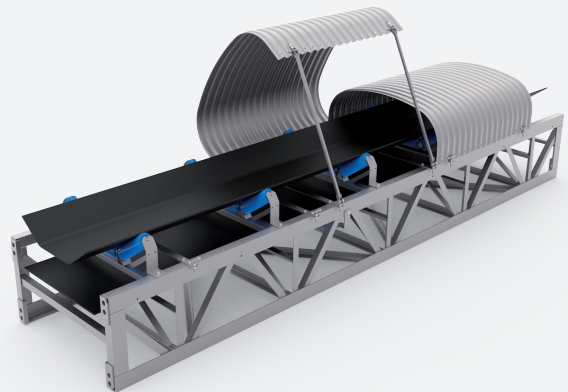
- Self-centering roller frames
- Primary and secondary scrapers
- Open or sealed discharge chutes with inspection hatch

- Maintenance walkways
- Maintenance platform
- Access stairs

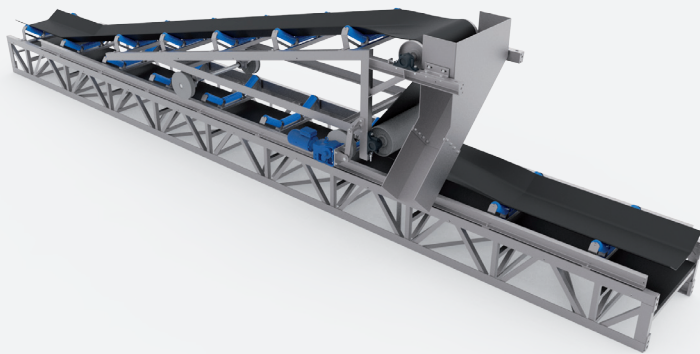




- Skirt plates with/without covers
- Curved top covers
- Belt alignment control switch



- Rotation monitor
- Additional emergency stop pull-wire
- Tripper system



- Motorized radial undercarriage
- Set of supports: straight, "V" shaped, with skids, special configurations.
- Guards: Side mesh, underside mesh and roller baskets.



Delivery of pre-assembled conveyors

Before loading, the conveyor is assembled in our factory, including the vulcanization of the belt and a test run. After verifying its correct functioning, the conveyor is 'folded' for its transportation.



On site, the unloading, assembling and commissioning of the equipment is done fast and easily.



Assembly supervisor

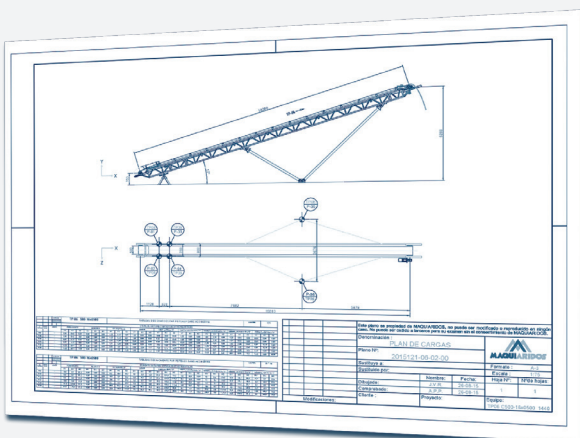
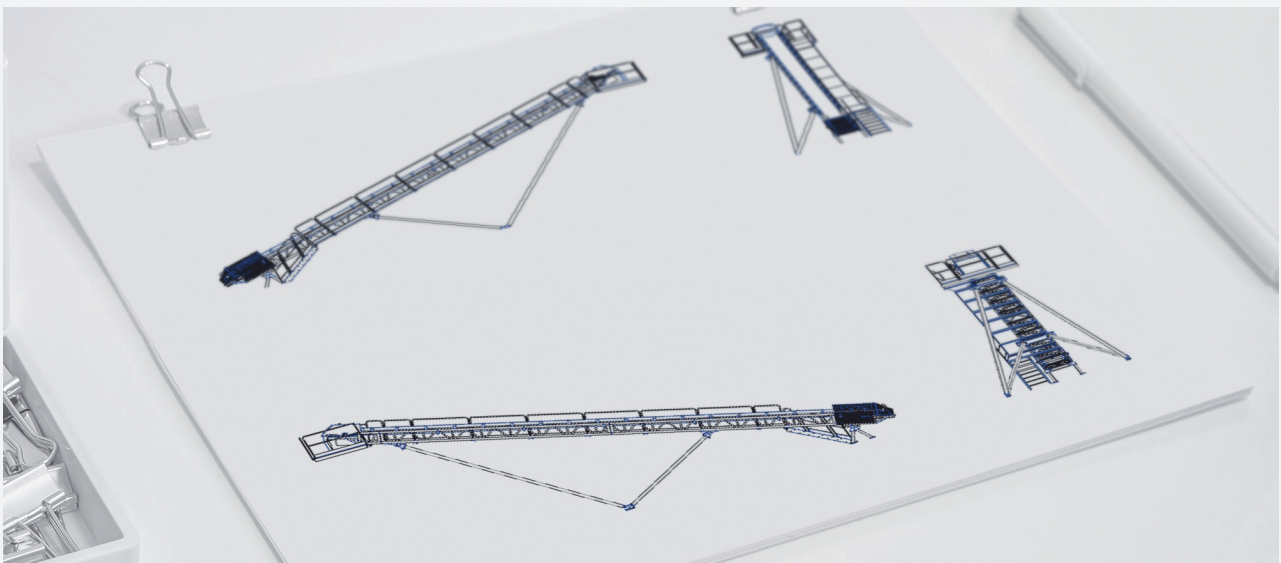
Maquiaridos offers the possibility of hiring the service of our assembly managers on site.

After-sales services

Maquiaridos has a large and complete stock with framework sections, components and accessories which allow to satisfy the needs of our customers as fast as possible.



The acquisition of any MAQCONVEYORS product means technical support from the initial sketch of the implementation of the conveyor in your installation, to its commissioning, as well as the after-sales service.



- Complete study of the belt conveyor
- Detailed implementation drawings
- Foundations loads drawings
- Detailed documentation for the assembly
- List of spare parts

Our knowledge at your service.



Maquiaridos S.L.

Autovía A-5, km 146,4.

45560 Oropesa / Toledo / Spain.

Tel. +34 925 450 027

Fax. +34 925 430 427

Modular & Quality

For more complete information
on Maqconveyors products and
services visit us on the web:

www.maqconveyors.com

info@maqconveyors.com